



 **STAR**
VAC[®]
nextlevelcleaning



▶ INDEX

Starvac - The Company	pag. 04
Central vacuum system - An Overview	pag. 05
1) BLOWER SELECTION	pag. 08
1.1) Side channel Blower „Premium“	pag. 09
1.2) Side channel Blower „Standard“	pag. 11
1.3) Accessories	pag. 13
2) MAIN SEPARATOR SELECTION	pag. 16
2.1) Main Separator „Small“	pag. 17
2.2) Main Separator „Medium“	pag. 18
2.3) Main Separator „Big“	pag. 19
2.4) Accessories	pag. 20
3) PRE - SEPARATOR	pag. 22
3.1) Cyclonic pre-separator „Small“	pag. 23
3.2) Cyclonic pre-separator „Medium“	pag. 23
3.3) Cyclonic pre-separator „Big“	pag. 23
4) CONTROL SYSTEM - INVERTER - SOFT START	pag. 24
4.1) Control system “Soft Star”	pag. 25
4.2) Control system Inverter “Standard”	pag. 26
4.3) Control system Inverter “Premium”	pag. 26
4.4) Optional	pag. 27
4.5) Industry 4.0 application	pag. 29
5) INLET POINTS	pag. 30
5.1) Metal Inlet Valve	pag. 30
5.2) Nylon Inlet Valve	pag. 30
5.3) Floor Inlet Valve	pag. 30
5.4) Floor Inlet Valve BACK-UP BOX	pag. 30
5.5) Hoose Reel	pag. 31
5.6) Suction Table	pag. 31
6) CLEANING ACCESSORIES	pag. 32
7) PIPING SYSTEM	pag. 38
7.1) Metal piping system	pag. 38
7.2) PVC piping system	pag. 40

STARVAC is a start-up Company, promoting cleaning technologies inside industrial building, with the mission to improve overall working conditions. The cleaning process and the quality of environment in production facilities are key factors, as well as the energy consumption.

STARVAC systems are assembled with the best quality components. Automation and maintenance are designed with plug & play solutions, to couple with new Industry 4.0 standards.

STARVAC stands for innovation: Better air quality, faster cleaning process, less noise and more comfort for workers are the best advantages.

STARVAC has a long experience. Its team has been in the central vacuum industry for over 20 years - so they know exactly the solution to recommend.

STARVAC offers a complete line of central vacuums for all industrial applications, including Carwash, Bakeries, Dental labs, etc.

STARVAC can design, manufacture, and even install heavy duty central vacuum cleaning systems for industrial customers worldwide.



Since the **central vacuum** unit is located out of working environment and **exhaust is outside**, there are several clear benefits:

- Space saving;
- Light weight accessories handy to be used;
- No more indoor pollution;
- Steady powerful vacuum;
- Reduced noise;
- Low maintenance & related cost;
- Energy efficiency.

RECOMMENDED IN ALL INDUSTRIES

It's perfect for all environments where the use of portable vacuum cleaners is difficult, for restricted space and ergonomics of production, or when portable vacuum cleaners are not efficient because of the dangerous and aggressive dust.

WHEN IT BECOMES INDISPENSABLE?

If it is a must to minimize cleaning times, as in assembly lines, and a vigorous suction power must be immediately to grab.

- If the spaces for the handling of a bulky and noisy trolley-mounted vacuum cleaner are too small.
- If the powders or scraps to be vacuumed are aggressive, toxic or simply bulky.
- If the work or production facility are developed on vertical levels, such as silos.
- If not even a grain of dust is allowed in the area, as in clean or white rooms.
- If several operators or working tools must vacuum simultaneously in a limited place

THE PROJECT PROCESS

GETTING INFORMATION

- Getting information's and the planimetry
- Costumer request list, no. max. operators, material aspirated, quantity per hour...

01

FIRST PROPOSAL

- Includes first offer
- First 2D Layout

02

REVISE THE FIRST PROPOSAL

- Revise the first proposal with the costumer. Change the layout if needed to ensure that it fits the requirements.
- Generate a 3D layout

03

FINAL OFFER

- Including the 3D Layout to ensure everything is clear and that there are no misunderstandings

04

ON SITE CONTROL

- If the costumer signs the contract our next step will be to make a visit on site.
- Ensure everything the layout is up to date; change material list if needed

05

START THE INSTALLATION

- After the final check on site, the material will be shipped and the installation can begin

06

COMMISSIONING

- Once the installation is finished we will control the central vacuum system for any losses or any other problems
- Once the controls are finished we will do the commissioning

07

MAINTENANCE

- We offer maintenance service all over the world
- The only ordinary maintenance is to empty the dust container

08

ENJOY
YOUR CENTRAL VACUUM CLEANER





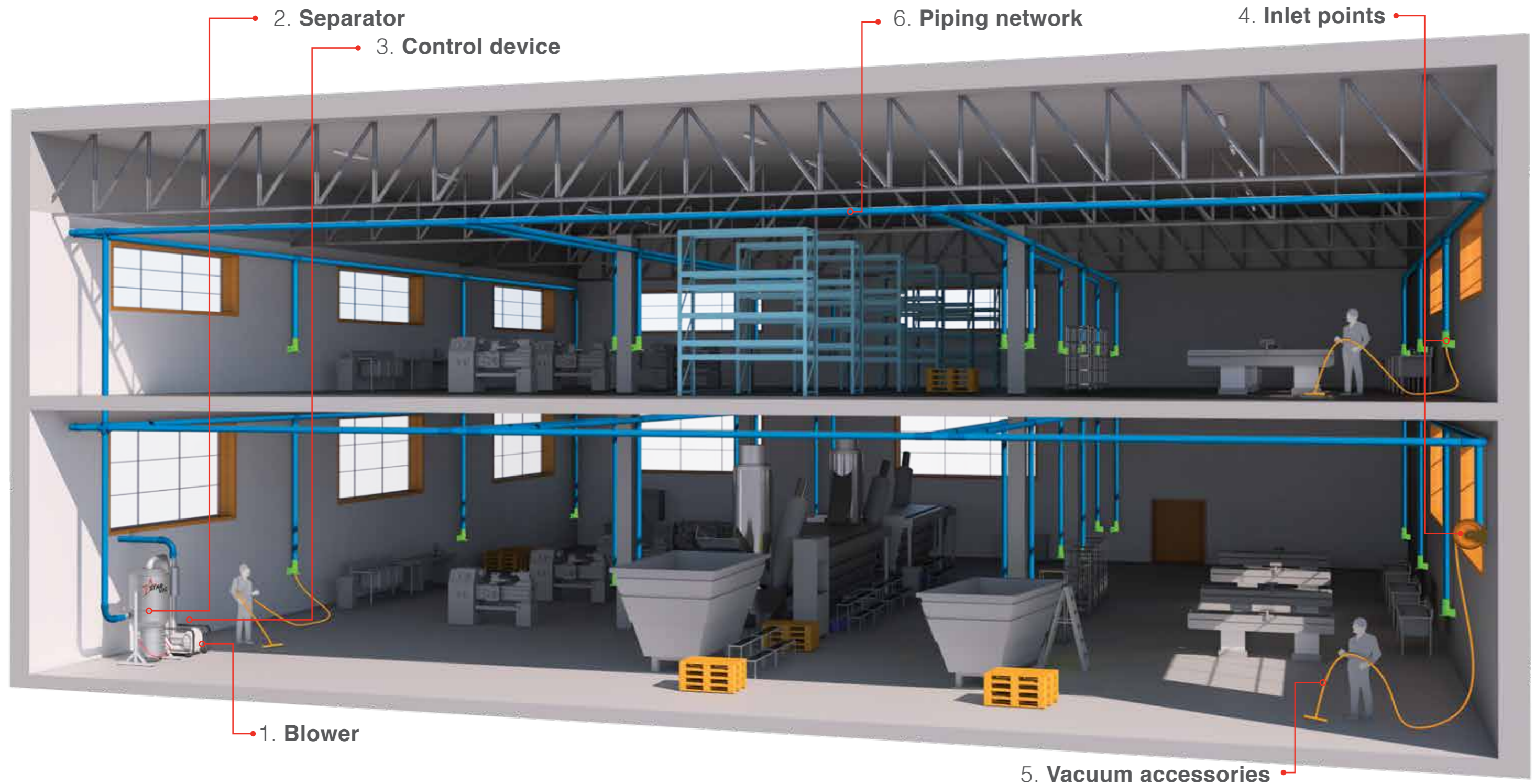
CENTRAL VACUUM SYSTEMS - An Overview

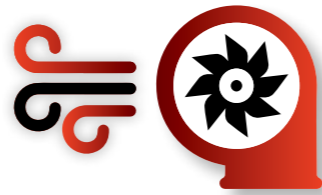
An **industrial central vacuum** system can be listed in 6 main parts:

1. The vacuum producer, named also **blower**
2. The **dust separator**, mechanical or cyclonic
3. The **control device**, which can be a simple electric control box or include other sensors
4. The **inlet points**, from classical inlet valves to hose reels or other orifices
5. The vacuum **accessories**, flexible hoses and brushes
6. The **pipng network**, generally in metal, but also available in PVC

The central vacuum unit, made of blower, separator and control box, is usually installed in a technical room, far away from the operators, so it gives **many benefits**.

The piping network connects the central vacuum unit with many different suction points, which are strategically placed in order to reach every possible place needed.





Premium side channel blowers are powered by **Siemens IE3 motors**, featuring the highest possible energy efficiency. They are the most reliable and durable blowers, which are granted **20.000 Hours** without any fail or any maintenance cost. Even after this time, the only consumable part are the bearings, that can be easily changed. For this reason, the premium blowers are **maintenance-free**.

Available in three different sizes we can cover the widest application field with short delivery times. All blowers are DIN EN 60034 proven and fulfill the **IP55** protection standard.

A built-in PTC resistor checks the internal temperature of the motor in real time and emergency stops him in chase of overheating. On request we can have also a vibration sensor to check the status of the bearings.

Premium blowers are **Made in Germany** simply the best you can get.

1.1) SAP055 – 6,3kW @50Hz



SAP055 is the base of Premium Side-Channel Blowers. The casing is made of cast iron and the impeller in lightweight aluminum. Silenced inside, powered by Siemens motor IE3, built-in PTC resistor. With Soft-Start it delivers max. 6,3kW. With Inverter its power consumption range is extended: min. 3kW - max. 10,9kW. Siemens Motor, IE3, IP55 protection, built in PTC resistor, DIN EN 60034. Made in Germany. Delivered on metal frame with antivibrations dampers and adjustable feet.

Technical Data		
SAP055		
Max. Airflow	m³/h	550
Max. Vacuum	mBar	300
Airflow @150mBar	m³/h @150mBar	375
Connection Voltage	VΔ / VY	230VΔ / 400VY
Current Consumption	AΔ / AY	20,4AΔ / 11,8AY
Power	kW	6,3
In - Output Diameter	mm	75
Dimension incl. Frame	L/W/H cm	99 x 65 x 63
Sound Emission	dB(A)	72
Resistance class	IP	IP55
Weight incl. Frame	kg	150



How to find the right blower, depending by simultaneous users, kind of application, and diameter of tool:

Blowers combined with Soft-Start	Standard industrial use Max. users at 150 mbar				Heavy industrial use Max. users at 200 mbar	
	Ø=28mm	Ø=32mm	Ø=40mm	Ø=50mm	Ø=40mm	Ø=50mm
SAP055 & SAS055	4	3	1	-	1	-
SAP075 & SAS075	6	4	3	1	2	1
SAP120 & SAS120	9	7	4	2	3	2

Blowers combined with Inverter	Standard industrial use Max. users at 150 mbar				Heavy industrial use Max. users at 200 mbar	
	Ø=28mm	Ø=32mm	Ø=40mm	Ø=50mm	Ø=40mm	Ø=50mm
SAP055 & SAS055	8	6	3	2	3	2
SAP075 & SAS075	11	7	5	3	4	3
SAP120 & SAS120	15	11	7	4	6	4

All blowers above can be combined or added with each other. For instance, if you need 4 simultaneous users Ø40 in heavy industrial use, you can choose 2 x SAP075. See page 28 for other examples.

- D=28 is for power tools (grinding machines, continuous removal from automatic tools, etc.)
- D=32 is for commercial areas, fine dust or light application
- D=40 is the standard for industrial application – it's a good maneuverability and good airflow.
- D=50 is for heavy industrial application – metal chops, steel or incumbent material.

All blowers are controlled by a Soft-Starter or Inverter.

- Soft-Starter:** in the basic mode the blowers will be controlled by a Soft-Starter, which will guarantee a smooth start, without any current peaks. Once switched on, the blower will run at fixed frequency of 50Hz, at fixed speed.
- Inverter:** In the save-energy mode, the control of the blower is done by an electronic frequency converter, or so called inverter or speed drive. With the Inverter there is the possibility to adapt the blower speed by means of a pressure gauge. The motor will no longer run at a fixed frequency of 50Hz, but will run in a range between 25 and 87Hz. This ensures maximum efficiency and a higher airflow at peak speed.

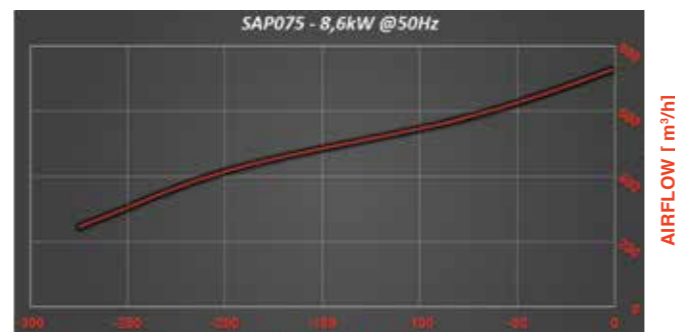
STANDARD side channel Blowers

1.2) SAP075 – 8,6kW @50Hz



SAP075 is the medium size of Premium Side-Channel Blowers. The casing is made of cast iron and the impeller in lightweight aluminum. Silenced inside, powered by Siemens motor IE3, built-in PTC resistor. With Soft-Start it delivers max. 8,6kW. With Inverter its power consumption range is extended: min. 4kW - max. 14,9kW. Siemens Motor, IE3, IP55 protection, build in PTC resistor, DIN EN 60034. Made in Germany. Delivered on metal frame with antivibrations dampers and adjustable feet.

Technical Data		SAP075	
Max. Airflow	m³/h	730	
Max. Vacuum	mBar	270	
Airflow @150mBar	m³/h @150mBar	470	
Connection Voltage	VΔ / VY	230VΔ / 400VY	
Current Consumption	AΔ / AY	26,8AΔ / 15,5AY	
Power	kW	8,6	
In - Output Diameter	mm	75	
Dimension incl. Frame	L/W/H cm	99 x 65 x 63	
Sound Emission	dB(A)	73	
Resistance class	IP	IP55	
Weight incl. Frame	kg	165	



SUCTION PRESSURE [mbar]

The **Standard** blowers offer an economical alternative compared to premium blowers. Compared to the premium blower, the energy efficiency is lower, **IE1** and the build quality is a little bit lower, making them less efficient than the premium ones. Also the Performance is 10% less than the premium blowers. Although, if price matters, our standard blowers have an unbeatable price to performance ratio. The standard blowers fulfill the DIN EN 60034 and the IP55 protection standard. They are all certified as IE1 "standard efficiency".

1.4) SAS055 – 5,5kW @50Hz



SAS055 is the base of Standard Side-Channel Blowers. The casing is made of cast iron and the impeller in lightweight aluminum. Silenced inside, powered by IE1 motor, built-in PTC resistor. With Soft-Start it delivers max. 5,5kW. With Inverter its power consumption range is extended: min. 2,7kW - max. 9,5kW. Standard Motor, IE1, IP55 protection, build in PTC resistor, DIN EN 60034. Delivered on metal frame with antivibrations dampers and adjustable feet.

Technical Data		SAS055	
Max. Airflow	m³/h	510	
Max. Vacuum	mBar	280	
Airflow @150mBar	m³/h @150mBar	335	
Connection Voltage	VΔ / VY	230VΔ / 400VY	
Current Consumption	AΔ / AY	23AΔ / 13,3AY	
Power	kW	5,5	
In - Output Diameter	mm	75	
Dimension incl. Frame	L/W/H cm	99 x 65 x 63	
Sound Emission	dB(A)	78	
Resistance class	IP	IP55	
Weight incl. Frame	kg	90	



SUCTION PRESSURE [mbar]

1.3) SAPI20– 12,6 kW @50Hz



SAPI20 is the biggest size of Premium Side-Channel Blowers. The casing is made of cast iron and the impeller in lightweight aluminum. Silenced inside, powered by Siemens motor IE3, built-in PTC resistor. With Soft-Start it delivers max. 12,6kW. With Inverter its power consumption range is extended: min. 6kW - max. 18,6kW. Siemens Motor, IE3, IP55 protection, build in PTC resistor, DIN EN 60034. Made in Germany. Delivered on metal frame with antivibrations dampers and adjustable feet.

Technical Data		SAPI20	
Max. Airflow	m³/h	1.090	
Max. Vacuum	mBar	270	
Airflow @150mBar	m³/h @150mBar	820	
Connection Voltage	VΔ / VY	230VΔ / 400VY	
Current Consumption	AΔ / AY	40,3AΔ / 23,3AY	
Power	kW	12,6	
In - Output Diameter	mm	112	
Dimension incl. Frame	L/W/H cm	99 x 65 x 63	
Sound Emission	dB(A)	78	
Resistance class	IP	IP55	
Weight incl. Frame	kg	260	



SUCTION PRESSURE [mbar]

BLOWER ACCESSORIES

1.5) SAS075 – 7,5kW @50Hz



SAS075 is the base of Standard Side-Channel Blowers. The casing is made of cast iron and the impeller in lightweight aluminum. Silenced inside, powered by IE1 motor, built-in PTC resistor. With Soft-Start it delivers max. 7,5kW. With Inverter its power consumption range is extended: min. 3,7kW - max. 13kW. Standard Motor, IE1, IP55 protection, built in PTC resistor, DIN EN 60034. Delivered on metal frame with antivibrations dampers and adjustable feet.

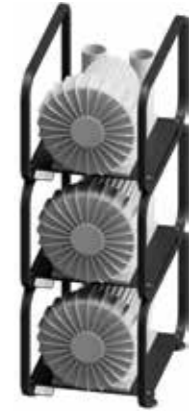
Technical Data		IE1 Standard Efficiency	
SAS075			
Max. Airflow	m³/h	670	
Max. Vacuum	mBar	260	
Airflow @150mBar	m³/h @150mBar	425	
Connection Voltage	VΔ / VY	230VΔ / 400VY	
Current Consumption	AΔ / AY	29AΔ / 16,7AY	
Power	kW	7,5	
In - Output Diameter	mm	75	
Dimension incl. Frame	L/W/H cm	99 x 65 x 63	
Sound Emission	dB(A)	74	
Resistance class	IP	IP55	
Weight incl. Frame	kg	100	



SUCTION PRESSURE [mbar]

Tower Frames

Useful if space is limited, to pile up motors. Include all the parts to connect directly the motors between them and to the dust separator. Include also the one-way valve.



For 2 blowers SA.055
For 2 blowers SA.075
For 2 blowers SA.120

TWR255
TWR275
TWR220

For 3 blowers SA.055
For 3 blowers SA.075
For 3 blowers SA.120

TWR355
TWR375
TWR320

1.6) SAS120– 12,6 kW @50Hz



SAS120 is the base of Standard Side-Channel Blowers. The casing is made of cast iron and the impeller in lightweight aluminum. Silenced inside, powered by IE1 motor, built-in PTC resistor. With Soft-Start it delivers max. 12,5kW. With Inverter its power consumption range is extended: min. 6kW - max. 18,5kW. Standard Motor, IE1, IP55 protection, built in PTC resistor, DIN EN 60034. Delivered on metal frame with antivibrations dampers and adjustable feet.

Technical Data		IE1 Standard Efficiency	
SAS120			
Max. Airflow	m³/h	1.010	
Max. Vacuum	mBar	260	
Airflow @150mBar	m³/h @150mBar	760	
Connection Voltage	VΔ / VY	230VΔ / 400VY	
Current Consumption	AΔ / AY	48AΔ / 28AY	
Power	kW	12,5	
In - Output Diameter	mm	112	
Dimension incl. Frame	L/W/H cm	99 x 65 x 63	
Sound Emission	dB(A)	77	
Resistance class	IP	IP55	
Weight incl. Frame	kg	145	



SUCTION PRESSURE [mbar]

Soundproof Cover

To reduce further the noise of the blowers, protect from possible dirt and to enable the installation outdoor with IP65.



For blower SA.055
For blower SA.075
For blower SA.120

CVR055
CVR075
CVR120

External Silencer

This supplementary silencer reduces the noise furthermore and provides cooling for the hot exhausted air.



For blowers SA.055
For blowers SA.075
For blowers SAP120

SLC055
SLC075
SLC120

Pressure Relief Valves

For blowers working without frequency converter this is strongly recommended. It limits the vacuum to prevent any damage to the system and lets the blower breathe better in critical situations.

For blowers SA.055
For blowers SA.075
For blowers SA.120

VPR055
VPR075
VPR120



One-Way Valve

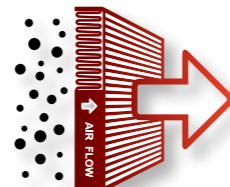
This valve is necessary when there are more than one blower installed.

For blowers SA.055
For blowers SA.075
For blowers SAP120

VNR055
VNR075
VNR120



SEPARATOR SELECTION



SEP 100

A complete range with **3 different sizes & filter surfaces**, to adapt to all airflow needs and blower selection.
 NEW! The dust separators are projected with **CFD Computerized Fluids Dynamics** to ensure best ratio between centrifugal dust separation and reduce air loss.



Dust Type	Filter Class	Airflow			
		max. 500m³/h	max. 1.000m³/h	max. 2.000m³/h	max. 3.000m³/h
Standard dust	L	SEP100	SEP200	SEP300	
Fine dust	M	SEP100	SEP200	SEP300	
Hazardous dust (pharma)	H	SEP200	SEP300		

The all-round separator for industrial use. Made of steel and powder coated in anthracite. Fixed on adjustable rubber feet. Gravitational separation of airflow through mechanical deflector, leverage on the dustbin for easy maneuver, large cartridge filter easy to be changed. Reversible inlet/outlet for left-right piping.



Technical Data SEP100

Filter Class "L"

Max. allowed Airflow	m³/h	1.000
Max. allowed Vacuum	mBar	350
Total Filter Surface	m²	8
No. of Filter	Pieces	1
In - Output Diameter	mm	100
Dustbin capacity	l	100
Dimension incl. Frame	L/W/H cm	95 x 83 x 170
Weight incl. Frame	kg	90
Packed dimensions	L/W/H cm	120 x 100 x 185

Examples for Standard Dust: Sand, granulate, chips, general dust...;
 Examples for Fine Dust: Abrasive fine dust from grinding tools, powder coating...;
 Examples for Hazardous Dust: Pharmaceutical dust, asbestos, carbon nanotubes...;

All separators available in ATEX version Z22 - risk-free in case of organic dust



The patented handle remains on dust bin and can be used for mechanic lifting

Optional available

Automatic filter cleaning
 Capacitive sensor
 Mechanical sensor
 Upgrade ATEX
 Kit for disposable bag

JPC100
 SEN001
 SEN002
 ATX100
 DSP100

Upgrade class M
 Upgrade class H
 Spare filter class L
 Spare filter class M
 Spare filter class H

FIL101
 FIL102
 FIL105
 FIL106
 FIL107

SEP 200

Large separator for industrial use. Made of steel and powder coated in anthracite. Fixed on adjustable rubber feet. Gravitational separation of airflow through mechanical deflector, leverage on the dustbin for easy maneuver, three large cartridge filters easy to be changed. Reversible inlet/outlet for left-right piping.



Tecnicl Data SEP200

Filter Class "L"

Max. allowed Airflow	m ³ /h	2.000
Max. allowed Vacuum	mBar	350
Total Filter Surface	m ²	19
No. of Filter	Pieces	3
In - Output Diameter	mm	150
Dustbin capacity	l	210
Dimension incl. Frame	L/W/H cm	95 x 105 x 237
Weigth incl. Frame	kg	140
Packed dimensions	L/W/H cm	120 x 100 x 225

SEP 300

XL separator for industrial use. Made of steel and powder coated in anthracite. Fixed on adjustable rubber feet. Gravitational separation of airflow through mechanical deflector, leverage on the dustbin for easy maneuver, three extra-large cartridge filters easy to be changed. Reversible inlet/outlet for left-right piping.



Tecnicl Data SEP300

Filter Class "L"

Max. allowed Airflow	m ³ /h	3.000
Max. allowed Vacuum	mBar	350
Total Filter Surface	m ²	29
No. of Filter	Pieces	3
In - Output Diameter	mm	200
Dustbin capacity	l	210
Dimension incl. Frame	L/W/H cm	95 x 105 x 295
Weigth incl. Frame	kg	165
Packed dimensions	L/W/H cm	120 x 100 x 270

Optional available

Automatic filter cleaning
Capacitive sensor
Mechanical sensor
Upgrade ATEX
Kit for disposable bag
Frame for BIG BAG

JPC200
SEN001
SEN002
ATX200
DSP200
BIG200

Upgrade class M
Upgrade class H
Spare filter class L
Spare filter class M
Spare filter class H

FIL201
FIL202
FIL205
FIL206
FIL207

Optional available

Automatic filter cleaning
Capacitive sensor
Mechanical sensor
Upgrade ATEX
Kit for disposable bag
Frame for BIG BAG

JPC300
SEN001
SEN002
ATX300
DSP300
BIG300

Upgrade class M
Upgrade class H
Spare filter class L
Spare filter class M
Spare filter class H

FIL301
FIL302
FIL305
FIL306
FIL307

Automatic Filter Cleaning

Automatic filter cleaning kit, with air-pressure tank, quick air connection, electronic module for starting. Controlled with timer (standard) or differential pressure device. Can be added separately anytime.



Technical Data

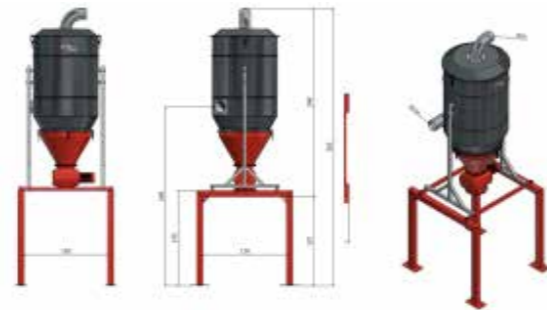
Automatic Filter Cleaning

Nominal pressure	bar	4
Max Pressure	bar	8
Air consumption per cleaning process	l	28
Weight	kg	12

Automatic cleaning kit for SEP100	JPC100
Automatic cleaning kit for SEP200	JPC200
Automatic cleaning kit for SEP300	JPC300
Upgrade differential sensor	DIF001

Frame for Separators

Frame to raise the dust separator for external use of mobile container or big bag 1m³, available with Balanced Flap Valve (1), Rotary Valve (2) or double gate Valves (3). Bottom exit: Ø250mm



Frame for SEP200	BIG200
Frame for SEP300	BIG300

Balanced Flap Valve (1)

Economical solution, but cannot continuously discharge the debris. When the vacuum cleaner stops, the balanced valve opens and the dust falls outside.



Kit balanced leverage valve for SEP200	BAL200
Kit balanced leverage valve for SEP300	BAL300

Rotary Valve (2)

Rotary valve in carbon steel with 1.3kW motor and Vulcolan® shovels, available with control by a standard timer, a capacitive or a mechanical sensor. See page 27 and 28.



Rotary valve	ROT200 - 300
Capacitive sensor	SEN001
Mechanical sensor	SEN002
Upgrade ATEX	ROT500

Gate Valves on Separator (3)

Pneumatic gate valve for discharge of all dust from filter chamber, operation with 2 bar or 24V. controlled by a standard timer, a capacitive or mechanical sensor. See page 27 and 28. Ø250mm.



Pneumatic gate valve	GAT252
Electric gate valve	GAT253
Capacitive sensor	SEN001
Mechanical sensor	SEN002
Upgrade ATEX	ATX252

Kit for Disposable Bag

Kit with by-pass connection to compensate pressure in & out the plastic bag, with grid and quick connection pipe.



Kit for disposable bag	DSP100 - 200 - 300
Spare bags, packaged 10 pcs	DSP010

Spare Filters

	SEP100	SEP200	SEP300
Filter class L	FIL105	FIL205*	FIL305*
Filter class M	FIL106	FIL206*	FIL306*
Filter class H	FIL107	FIL207*	FIL307*

* price for one filter; SEP200 & 300 hold 3 filters.



Connection Packages

	SEPARATOR	SEP100	SEP200	SEP300
BLOWER				
SA.055		CON155	CON255	
SA.075		CON175	CON275	CON375
SA.120			CON220	CON320

PRE-SEPARATOR SELECTION



VRC075 / 150 / 300

The cyclonic pre-separator is used as a preventiv air treatment, to partially filter particles. It is used to limit the powder loads arriving to the main separator. Suitable to separate any powder, like wood shavings, metal chips recycling and waste sectors.

The benefits of using this cyclonic pre - separator are:

- Less maintenance on the main separator, because the filters are less loaded.
- Maintenance free
- Filters up to 95% of the particles with centrifugal force (there is no filter inside to be cleaned!)

Available also with rotary valve for continuous unloading.



Cyclonic separator code	Max. allowed Airflow
VRC075 - small cyclonic separator	750m ³ /h
VRC150 - medium cyclonic separator	1500m ³ /h
VRC300 - big cyclonic separator	3000m ³ /h

All Cyclonic separators available in ATEX version Z22 - risk-free in case of organic dust



All-round cyclonic pre-separator for industrial use. Made of steel and powder coated in anthracite. Fixed on three steel feet, centrifugal separation of the clean air and dust through centrifugal force. Highly recommended for big quantities of fine dust. Our cyclonic pre- separator is water resistant, which gives him the ability to be even mounted outside. The 100L dustbin offers a decent size.

Technical Data

VRC075

Max. allowed Airflow	m ³ /h	750
Max. allowed Vacuum	mBar	350
Filter efficiency	%	85-95%
In - Output Diameter	mm	100
Dimension incl. Frame	L/W/H cm	40 x 40 x 160
Weigth incl. Frame	kg	70

Technical Data

VRC150

Max. allowed Airflow	m ³ /h	1.500
Max. allowed Vacuum	mBar	350
Filter efficiency	%	85-95%
In - Output Diameter	mm	150
Dimension incl. Frame	L/W/H cm	50 x 50 x 195
Weigth incl. Frame	kg	85

Technical Data

VRC300

Max. allowed Airflow	m ³ /h	3.000
Max. allowed Vacuum	mBar	350
Filter efficiency	%	85-95%
In - Output Diameter	mm	200
Dimension incl. Frame	L/W/H cm	70 x 70 x 235
Weigth incl. Frame	kg	100

Optional available

Rotary valve
Capacitive sensor
Mechanical sensor
Upgrade ATEX

ROT075/ROT150/ROT301
SEN001
SEN002
VRX075/VRX150/VRX300

CONTROL SYSTEM



CAP 055 / 075 / 120

In total, we offer 9 basic control boxes.
Choose the right control box for your blower in the table below.

WITH SOFT-START

Blowers	Standard control Box Soft-Start	Premium control Box Soft-Start
Code		
SAP055 & SAS055	/	CAP055
SAP075 & SAS075	/	CAP075
SAP120 & SAS120	/	CAP120

WITH INVERTER

Blowers	Standard control Box Inverter	Premium control Box Inverter
Code		
SAP055 & SAS055	CFS055	CFP055
SAP075 & SAS075	CFS075	CFP075
SAP120 & SAS120	CFS120	CFP120

The basic control boxes are plug and play. They include all parts to start and stop the blower remotely by a external start signal.
Further to this, the Inverter control box includes a pressure sensor. The inverter than will modulate the motor and try to keep the pre-set vacuum.

Example 1) Selected 1x SA.075 "Inverter" and 2x SA.055 "Soft Start"

To run this combination of blower you need:
1x CF.075 - Control box 7,5kW Inverter
2x CAP055 - Control box 5,5 Soft Start
1x CMP004 - Expansion unit for modular blower

With this configuration, the first blower (master) will always start first and keep the set dynamic vacuum, the second blower (slave), will provide a power boost when the master reaches its limit.
In this chase, until 7 simultaneous users with 32mm only the master will run.
If the 8th user starts up, the slave will also start.
Both together will then keep running and can provide enough suction power until 10 operators are reached.

Example 2) Selected 3x SA.075 "Soft Start"

To run this combination of blower you need:
3x CAP075 - Control box 7,5 Soft Start
1x CMP004 - Expansion unit for modular blower

With this configuration one blower (selected through randomly) will run until a maximum of 4 users with 32mm are reached. With the 5th user a second blower will ramp up, providing enough suction power for up to 8 users.

This control box includes a soft – starter, which will guarantee a smooth engine start and stop. This enhances the lifetime of the blower and eliminates all current peaks.
Please keep in mind, that a Soft-Start control box is not capable to modulate the motor at all.



Technical Data

CAP055 /075 /120



		055 / 075 / 120
Connection Voltage	V	380V
Rated Current	A	16 / 24 / 32
Power	kW	5,5 / 7,5 / 12,5
Connection Frequency	Hz	50
Dimensions	L/W/H cm	20 x 30 x 40
Resistance class	IP	IP55
Weigth	kg	9 / 10,5 / 12

Optional available

Control automatic filter cleaning
Control for modular blower
Control for rotary valve
Capacitive sensor
Gate Valve control
PLC optional - industry 4.0

JPC.0.
CMP004
ROT00.
CPS100
GVC0..
PLC001

CFS 055 / 075 / 120



This control box includes a Inverter and a pressure sensor. A smooth start / stop of the engine is guaranteed and, in addition, it will give the blower the ability to modulate. This enhances the blowers range and will slow him down when less suction is needed and speed him up when more vacuum is needed. In contrast to the Soft-Start solution, this one will drain less power, since it constantly measures the need of vacuum and controls the blowers RPM in base of the received data from the pressure sensor. With this solution maximum efficiency and maximum power are assured.

Tecnical Data

CFS055 /075 /120

		055 / 075 / 120
Connection Voltage	V	380V
Rated Current	A	26 / 34 / 49
Nominal Power	kW	5,5 / 7,5 / 12,5
Connection Frequency	Hz	50
Max. Output Current	A	23 / 30 / 44
Max. Output Power	kW	15 / 19 / 28
Dimensions	L/W/H cm	30 x 50 x 60
Resistance class	IP	IP55
Weigth	kg	15 / 18 / 25



Optional available

JPC101 / JPC201 / JPC301

Surcharge for standard control unit of the automated filter cleaning system. This optional uses a simple programmable timer (JPC200+300 a sequence timer), which every pre-set time cleans the filter automatically. The timer will be mounted inside the main control box.



JPC102 / JPC202 / JPC302

Surcharge for advanced control unit of the automated filter cleaning system. This optional uses a differential pressure gauge, which continuously measures the filter status. A PLC continuously the status of the filter and when it reaches a certain dirtiness, it automatically cleans the filter. If the filter (usually after years of use) can not be cleaned anymore by the automated cleaning system, the PLC emits a alarm to change the filter completely. This solution will keep the system always running smoothly and will consume less pressured air than the standard control unit.



CMP004

Surcharge for control unit for max 4 modular blowers. This optional is required when more than one blower is used. Through a PLC, which is connected to two pressure sensors, a complex algorithm will switch on or off selectively blowers, ensuring always a great suction power with maximum energy savings.



ROT001

Surcharge for standard control unit for the rotary valve. This optional uses a simple programmable timer, which every pre-set time starts and stops the rotary valve, which discharges the dust. The timer will be mounted inside the main control box and is free programmable.



CFP 055 / 075 / 120



This control box offers the same characteristics, which are offered by the CFS versions. In addition to that option is that for our Premium version we use the latest SIEMENS inverters, giving the maximum quality you can get on the market.

Tecnical Data

CFP055 /075 /120



		055 / 075 / 120
Connection Voltage	V	380V
Rated Current	A	28 / 36 / 52
Nominal Power	kW	5,5 / 7,5 / 12,5
Connection Frequency	Hz	50
Max. Output Current	A	25 / 32 / 47
Max. Output Power	kW	16 / 20 / 30
Dimensions	L/W/H cm	30 x 50 x 60
Resistance class	IP	IP55
Weigth	kg	18 / 21 / 28



▶ Optional available

ROT002

Surcharge for advanced control unit for the rotary valve. This optional uses a sensor, which is connected to a PLC. The PLC evaluates the signal from the sensor and, if the cone is full, starts the rotary valve for a pre-set time.

If, for any reason, the cone is not emptied by the rotary valve in a certain time, the PLC will emit a error signal to the operator, which has to check If the valve is working properly.

Note: Compatible with SEN001 and SEN002;



GVC004 / GVC008 / GVC012

This optional is used when automated valves for fully automated cleaning of a machine is used. Solenoid valves will command the main valves and open / close them accordingly.

It can be opened through a timer or through a pushbutton.

GVC004 can control up to 4 solenoid valves

GVC008 can control up to 8 solenoid valves

GVC012 can control up to 12 solenoid valves



PLC100

Standard HMI optional.

Monitoring through a display the following parameters:

- 1) The actual suction power
- 2) The working time of each blower
- 3) Dustbin full cycles (if sensor present) through display; Including standard display and PLC;



▶ Industry 4.0 application

PLC200

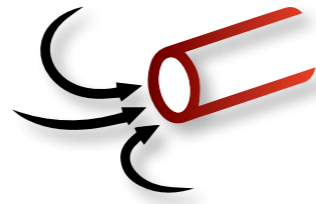
Advanced HMI optional.

Monitoring through a display and **through Smartphone** the following parameters:

- 1)The actual suction power
- 2)The working time of each blower
- 3) Dustbin full cycles (if sensor present) through display; Including standard display and PLC;
- 4) For external diagnostic system, connected to the internet;
- 5) Getting error message through Push E-Mail / SMS possible
- 6) Touchdisplay; Possibility to change parameters and sensors remotely, e.g. more suction power.

This is the state of art and is truly an fully integrated industry 4.0 control system.





Metal inlet valve

Metal inlet valve Ø50mm for external piping.
With micro-switch IP55;
Easy to open and with integrated cuff's blockage.

Diameter Ø50 | **MEV050**



Nylon inlet valve

Nylon inlet valve for external piping. With micro-switch IP55;

For accessories Ø32 | **NYV032**
For accessories Ø40 | **NYV040**
For accessories Ø50 | **NYV050**



Floor inlet valve

Floor metal inlet valve for external piping. With micro-switch IP55;

For accessories Ø32 | **FMV032**
For accessories Ø40 | **FMV040**
For accessories Ø50 | **FMV050**

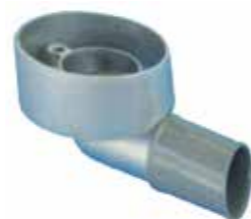


Floor inlet valve BACK-UP BOX

Floor metal inlet valve for external piping. With micro-switch IP55;

For fixing of floor inlet valve:

Streight | **FBB180**
At 90° | **FBB090**



Hose reel

Hose reel made of powder-coated metal.
Really versatile. Ideal for fast and flexible use of the central vacuum cleaner.

Recommended for production lines with a high demand of flexibility and vacuum.

Highly time saving when used often.

Available in 2 different versions, heavy industrial and light industrial, with 2 different diameters.

Hose Reel for heavy industrial applications with IP55 microswitch.

Hose Reel for heavy industries; Ø40mm - 10m; **HRP104**
Hose Reel for heavy industries; Ø40mm - 15m; **HRP154**
Hose Reel for heavy industries; Ø50mm - 10m; **HRP105**
Hose Reel for heavy industries; Ø50mm - 15m; **HRP155**

Hose Reel light industries; With IP55 microswitch and built-in valve;

Hose Reel for light industries; Ø40mm; 10m; **HRS104**
Hose Reel for light industries; Ø50mm; 10m; **HRS105**



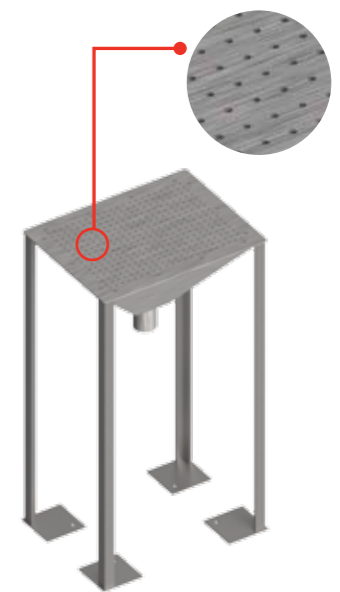
Vacuum table / Suction table

Vacuum table ideal for all kind of grinders, like eccentric grinders, die grinders, dental grinder, etc., made of high quality brushed stainless steel.

Keeps the working environment always clean with full area aspiration. There is no need to filter the dust out of the environment, since the table already vacuums it away.

Attachment diameter Ø50mm.

Vacuum table; Made of high quality stainless steel;
TAB001





Crush-proof flexible hose with rubber fittings;

Ideal for the suction of all dust, debris and abrasive materials. With hard rubber cuffs. Surface inside quite smooth, excellent flexibility, color black. Pressure resistance: 500 mbar

Temperature range: -30C° +60C°

- FXC407** | Complete flexible hose with fittings; 40mm - 7,5 meter
- FXC507** | Complete flexible hose with fittings; 50mm - 7,5 meter
- FXC410** | Complete flexible hose with fittings; 40mm - 10 meter
- FXC510** | Complete flexible hose with fittings; 50mm - 10 meter
- FXA407** | Complete flexible hose with fittings conductive; 40mm 7,5m
- FXA507** | Complete flexible hose with fittings conductive; 50mm 7,5m
- FXA410** | Complete flexible hose with fittings conductive; 40mm 10m
- FXA510** | Complete flexible hose with fittings conductive; 50mm 10m



Crush-proof flexible hose

Ideal for the suction of all dust, debris and abrasive materials. Surface inside quite smooth, excellent flexibility, color black.

Pressure resistance: 500 mbar
Temperature range: -30C° +60C°

- FXC401** | Flexible hose 40mm - the meter
- FXC501** | Flexible hose 50mm - the meter
- FXA401** | Flexible hose conductive 40mm - the meter
- FXA501** | Flexible hose conductive 50mm - the meter



Rubber fitting

In durable rubber, mounted on the suction hose.

Total length: 110mm
Weight: 90g

- ARF030** | Ø 32mm
- ARF040** | Ø 40mm
- ARF050** | Ø 50mm
- ARF041** | 360° revolving rubber cuff Ø 40mm
- ARF031** | Ø 32mm conductive
- ARF041** | Ø 40mm conductive
- ARF051** | Ø 50mm conductive



Metal fitting

In metal, mounted between the rubber fitting and the tools ARC, ACT, AST, ACC.

Total length: 130mm
Weight: 80g

- AMF030** | Ø 32mm
- AMF040** | Ø 40mm
- AMF050** | Ø 50mm



Metal coupling for metal inlet valve MEV050

Used to connect the metal inlet valve MEV050 with the flexible hose. Made of zinc coated steel.

Total length: 200mm
Weight: 150g

- AMC030** | Ø 32mm
- AMC040** | Ø 40mm
- AMC050** | Ø 50mm



S - Shaped connection wand Premium

Professional chromate steel or aluminum S-shaped handle fitted with a quick coupling.
Used to connect the suction hose with a floor brush.

Total height: 95cm
Weight: 1.750g

- ASW040** | chromate steel Ø 40mm
- ASW050** | chromate steel Ø 50mm
- ASW041** | Aluminium Ø 40mm
- ASW051** | Aluminium Ø 50mm



Technical floor brush Premium

Steel floor brush with adjustable wheels, for industrial dust & debris on technical floors. With rubber casing to prevent damage to the brush and to the furniture.
With a quick fix coupling.

To be connected with **ASW..0 & ASW..1**

Brush width: 400mm
Weight: 460g

- AFB440** | 400mm / Ø 40mm
- AFB450** | 400mm / Ø 50mm



S - Shaped connection wand Standard

Professional chromate steel or aluminum S-shaped handle fitted with a quick coupling.
Used to connect the suction hose with a floor brush.

Total height 93cm.
Weight: 1.250g

- ASW042** | Ø 40mm
- ASW052** | Ø 50mm



Technical floor brush Standard

Ideal for industrial dust & debris on technical floors.
Light weight.

To be connected with **ASW0.2**

Brush width: 400mm
Attachment diameter: Ø 40mm
Weight: 340g

- AFB441** | 400mm / Ø 40mm
- AFB451** | 400mm / Ø 50mm



Rubber cone with end cutted 45°

For suction of chips hand cleaning on machines. Made of a special high resistance rubber. The all-rounder cleaning tool.
Made of special conductive antistatic rubber.

Cone length: 200mm
Weight: 140g

- ARC040** | Ø 40mm
- ARC050** | Ø 50mm
- ARC041** | Ø 40mm in silicone
- ARC051** | Ø 50mm in silicone

To be used with **AMF040 / AMF050**.



Round dusting brush with 90° bend

With polyester hair. For delicate surfaces and persistent dust. With zinc coated steel bend.

Brush diameter: 100mm
Weight: 260g

- ARB040** | Ø 40mm
- ARB050** | Ø 50mm



Flat crevice tool

In hard rubber, for all kind of surfaces, specially designed to clean areas difficult to reach.
Made of special conductive antistatic rubber.

Total length: 300mm
Weight: 180g

ACT040 | Ø 40mm

ACT050 | Ø 50mm

To be used with **AMF040 / AMF050**.



Curved cone tool

For suction of small chips in extremely hard to reach areas.
Made of a special conductive, antistatic and high resistance rubber.

Cone length: 300mm
Weight: 170g

ACC040 | Ø 40mm

ACC050 | Ø 50mm

To be used with **AMF040 / AMF050**.



Scraping tool

In rubber, for all kind of surfaces, specially designed to clean persistent dust and wet surfaces.
Made of a special conductive, antistatic and high resistance rubber.

Total length: 175mm
Inlet width: 125mm
Weight: 120g

AST040 | Ø 40mm

AST050 | Ø 50mm



To be used with **AMF040 / AMF050**.



Suction lance

For suction of small chips and granulate in extremely hard to reach areas. Available in stainless steel and aluminium.

Lance length: 1000mm
Weight: 3250g

ASL040 | aluminium Ø 40mm

ASL050 | aluminium Ø 50mm

ASL041 | stainless steel Ø 40mm

ASL051 | stainless steel Ø 50mm



To be used with **AMF040 / AMF050**.



Technical floor brush Premium

Steel floor brush with adjustable wheels, for industrial dust & debris on technical floors. With rubber casing to prevent damage to the brush and to the furniture.
With a quick fix coupling.

Brush width: 400mm
Weight: 460g

AFB440 | 400mm / Ø 40mm

AFB450 | 400mm / Ø 50mm

To be used with **AMF040 / AMF050**.



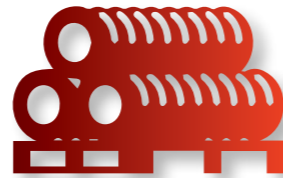
Hose Holder

Zinc coated wall mounted hose holder for a proper suction-hose storage including wand and accessories holder.

Weight: 340g

HHT001 | Hose holder zinc coated





▶ Metal

The steel piping system consists mainly of 6 different diameters. It is specially designed for high airflow and for central vacuum systems. All our piping system is made of high quality steel which is galvanized, which gives it the ability to be installed also outdoor.



- ZCP050** | Steel pipe Ø 50 length 3 or 6 m thickness 1,2mm
- ZCP080** | Steel pipe Ø 76 length 3 or 6 m thickness 1,2mm
- ZCP100** | Steel pipe Ø 102 length 3 or 6 m thickness 1,5mm
- ZCP125** | Steel pipe Ø 125 length 3 or 6 m thickness 1,5mm
- ZCP150** | Steel pipe Ø 150 length 3 or 6 m thickness 2mm
- ZCP200** | Steel pipe Ø 200 length 3 or 6 m thickness 2mm



- ZCE405** | Zinc coated ell 45° Ø 50mm x 1,5mm
- ZCE407** | Zinc coated ell 45° Ø 76mm x 1,5mm
- ZCE410** | Zinc coated ell 45° Ø 102mm x 1,5mm
- ZCE412** | Zinc coated ell 45° Ø 125mm x 2mm
- ZCE415** | Zinc coated ell 45° Ø 150mm x 2mm
- ZCE420** | Zinc coated ell 45° Ø 200mm x 2mm



- ZCE950** | Zinc coated ell 90° Ø 50mm x 1,5mm
- ZCE980** | Zinc coated ell 90° Ø 76mm x 1,5mm
- ZCE910** | Zinc coated ell 90° Ø 102mm x 2mm
- ZCE912** | Zinc coated ell 90° Ø 125mm x 2mm
- ZCE915** | Zinc coated ell 90° Ø 150mm x 2mm
- ZCE920** | Zinc coated ell 90° Ø 200mm x 2mm



- ZCT005** | Zinc coated tee 45° Ø 50/50 mm x 2mm
- ZCT007** | Zinc coated tee 45° Ø 76/76 mm x 2mm
- ZCT010** | Zinc coated tee 45° Ø 100/100 mm x 2mm
- ZCT012** | Zinc coated tee 45° Ø 125/125mm x 2mm
- ZCT015** | Zinc coated tee 45° Ø 150/150mm x 2mm
- ZCT020** | Zinc coated tee 45° Ø 200/200mm x 2mm



- ZCR805** | Zinc coated reduction tee 45° Ø 76/50 mm x 2mm
- ZCR108** | Zinc coated reduction tee 45° Ø 100/76 mm x 2mm
- ZCR105** | Zinc coated reduction tee 45° Ø 100/50 mm x 2mm
- ZCR121** | Zinc coated reduction tee 45° Ø 125/100 mm x 2mm
- ZCR151** | Zinc coated reduction tee 45° Ø 150/102mm x 2mm
- ZCR201** | Zinc coated reduction tee 45° Ø 200/150mm x 2mm



- ZCR795** | Zinc coated reduction tee 90° Ø 76/50 mm x 2mm
- ZCR197** | Zinc coated reduction tee 90° Ø 100/76 mm x 2mm
- ZCR195** | Zinc coated reduction tee 90° Ø 100/50 mm x 2mm
- ZCR290** | Zinc coated reduction tee 90° Ø 125/100 mm x 2mm



- ZCC705** | Zinc coated cone reduction Ø 76/50
- ZCC107** | Zinc coated cone reduction Ø 100/76
- ZCC210** | Zinc coated cone reduction Ø 125/100
- ZCC512** | Zinc coated cone reduction Ø 150/125
- ZCC215** | Zinc coated cone reduction Ø 200/150



- ZCY100** | Zinc coated fork Ø 100 x 2mm
- ZCY125** | Zinc coated fork Ø 125 x 2mm
- ZCY150** | Zinc coated fork Ø 150 x 2mm
- ZCY200** | Zinc coated fork Ø 200 x 2mm



- CCF050** | Compression couplings Ø 50
- CCF075** | Compression couplings Ø 76
- CCF100** | Compression couplings Ø 102
- CCF125** | Compression couplings Ø 125
- CCF150** | Compression couplings Ø 150
- CCF200** | Compression couplings Ø 200

PVC

Our PVC piping system consists mainly of 7 different diameters. It is specially designed for high airflow and high vacuum.
For light industrial application PVC is an economical solution to the metal piping system, but it is less resistant to abrasive materials than metal.



- PVP050** | PVC pipe Ø 50mm length 2m x 2mm
- PVC063** | PVC pipe Ø 63mm length 2m x 2mm
- PVP080** | PVC pipe Ø 80mm length 2m x 3mm
- PVP100** | PVC pipe Ø 100mm length 2m x 3mm
- PVP125** | PVC pipe Ø 125mm length 2m x 3mm
- PVP150** | PVC pipe Ø 150mm length 2m x 3mm
- PVP200** | PVC pipe Ø 200mm length 2m x 3mm



- PVF405** | PVC ell 45° Ø 50mm x 2mm F/F
- PVF406** | PVC ell 45° Ø 63mm x 3mm F/F
- PVF407** | PVC ell 45° Ø 76mm x 3mm F/F
- PVF410** | PVC ell 45° Ø 102mm x 3mm F/F
- PVF412** | PVC ell 45° Ø 125mm x 3mm F/F
- PVF415** | PVC ell 45° Ø 150mm x 3mm F/F
- PVF420** | PVC ell 45° Ø 200mm x 3mm F/F



- PVM405** | PVC ell 45° Ø 50mm x 2mm M/F
- PVM406** | PVC ell 45° Ø 63mm x 3mm M/F
- PVM407** | PVC ell 45° Ø 76mm x 3mm M/F
- PVM410** | PVC ell 45° Ø 102mm x 3mm M/F
- PVM412** | PVC ell 45° Ø 125mm x 3mm M/F
- PVM415** | PVC ell 45° Ø 150mm x 3mm M/F
- PVM420** | PVC ell 45° Ø 200mm x 3mm M/F



- PVT405** | PVC tee 45° Ø 50mm x 2mm
- PVT406** | PVC tee 45° Ø 63mm x 3mm
- PVT408** | PVC tee 45° Ø 80mm x 3mm
- PVT410** | PVC tee 45° Ø 100mm x 3mm
- PVT412** | PVC tee 45° Ø 125mm x 3mm
- PVT415** | PVC tee 45° Ø 150mm x 3mm
- PVT420** | PVC tee 45° Ø 200mm x 3mm



- PVT905** | PVC tee 90° Ø 50mm x 2mm
- PVT906** | PVC tee 90° Ø 63mm x 3mm
- PVT908** | PVC tee 90° Ø 80mm x 3mm
- PVT910** | PVC tee 90° Ø 100mm x 3mm
- PVT912** | PVC tee 90° Ø 125mm x 3mm
- PVT915** | PVC tee 90° Ø 150mm x 3mm
- PVT920** | PVC tee 90° Ø 200mm x 3mm



- PVR635** | PVC reduction Ø 63/50mm
- PVR806** | PVC reduction Ø 80/63mm
- PVR108** | PVC reduction Ø 100/80mm
- PVR210** | PVC reduction Ø 125/100mm
- PVR512** | PVC reduction Ø 150/125mm
- PVR215** | PVC reduction Ø 200/150mm



- PVC050** | PVC Coupling Ø 50mm x 2mm
- PVC063** | PVC Coupling Ø 63mm x 3mm
- PVC080** | PVC Coupling Ø 80mm x 3mm
- PVC100** | PVC Coupling Ø 100mm x 3mm
- PVC125** | PVC Coupling Ø 125mm x 3mm
- PVC150** | PVC Coupling Ø 150mm x 3mm
- PVC200** | PVC Coupling Ø 200mm x 3mm

Metal piping system			PVC piping system		
Code	Description	Weight per meter	Code	Description	Weight per meter
ZCP050	Steel pipe Ø 50 x 1,2mm	1,45kg	PVP050	PVC pipe Ø 50mm x 2mm	0,40kg
	/		PVC063	PVC pipe Ø 63mm x 2mm	0,55kg
ZCP080	Steel pipe Ø 76 x 1,2mm	2,20kg	PVP080	PVC pipe Ø 80mm x 3mm	1,00kg
ZCP100	Steel pipe Ø 102 x 1,5mm	3,00kg	PVP100	PVC pipe Ø 100mm x 3mm	1,30kg
ZCP125	Steel pipe Ø 125 x 1,5mm	3,65kg	PVP125	PVC pipe Ø 125mm x 3mm	1,60kg
ZCP150	Steel pipe Ø 154 x 2mm	4,50kg	PVP150	PVC pipe Ø 150mm x 3mm	1,95kg
ZCP200	Steel pipe Ø 200 x 2mm	5,90kg	PVP200	PVC pipe Ø 200mm x 3mm	2,60kg



Central Vacuum Systems
NOI Techpark Südtirol
Volta Street 13A - 39100 Bolzano Italy
Ph +39 0471 195 7100 | info@starvac.com | www.starvac.com

